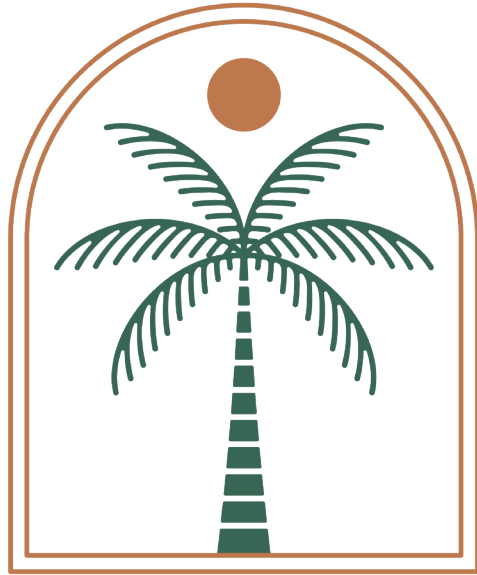




PALMETTO

ESTATES





PALMETTO
ESTATES

Live Close.
Live Connected.

In-Town Living

with Room to Grow

Palmetto Estates brings fresh new homes to a connected Bakersfield location close to restaurants, shopping, schools, and the everyday places that keep life moving.

Designed for modern households, young families, and buyers who want convenience without giving up space, Palmetto Estates puts you near the best parts of town while giving you a home that feels current, comfortable, and ready for what's next.



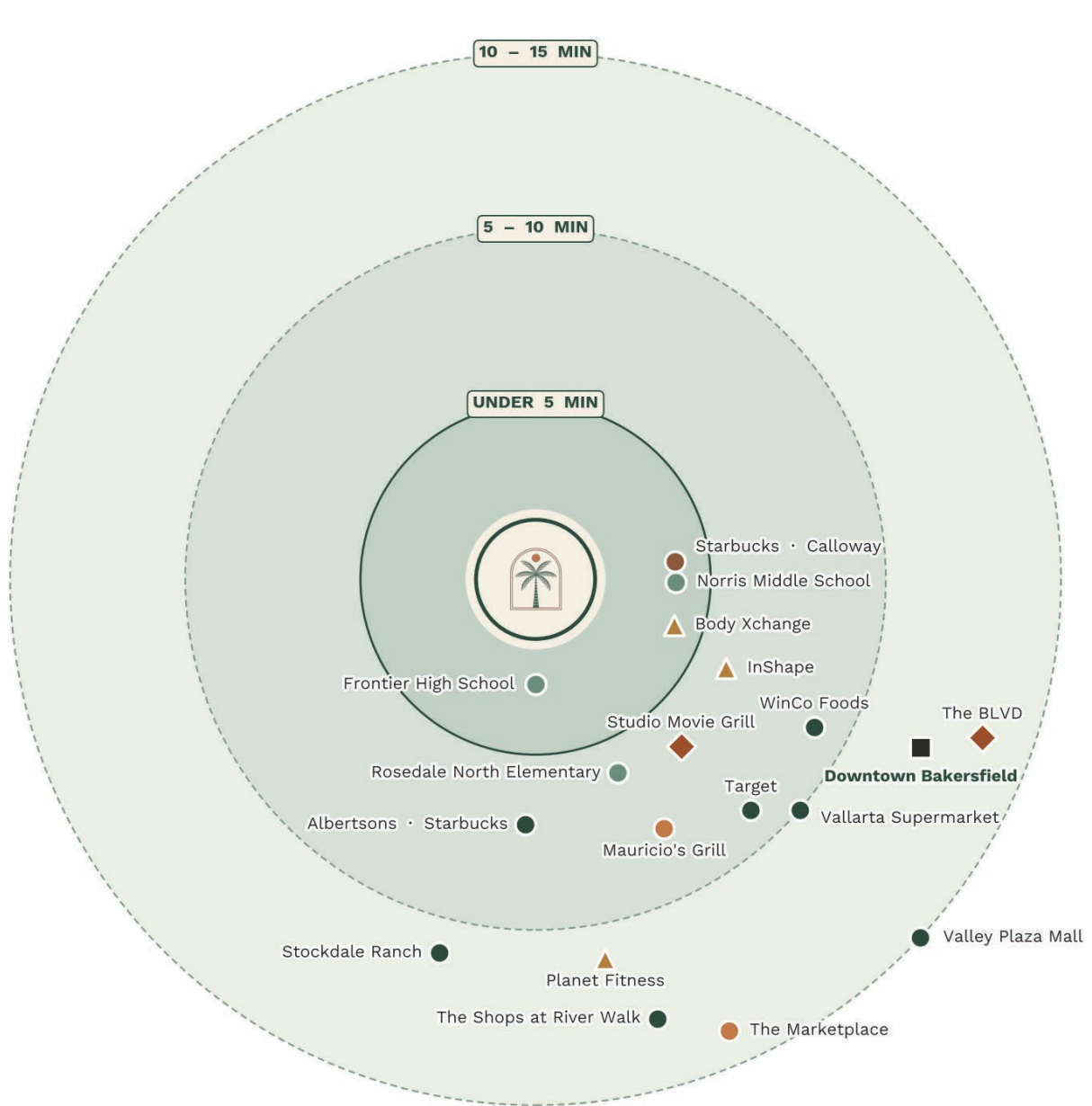
IN THE CENTER OF IT ALL

Minutes to the places you love the most.











- 3 MIN | SCHOOLS
- 5 MIN | COFFEE SHOPS
- 6 MIN | SHOPPING
- 7 MIN | RESTAURANTS
- 15 MIN | DOWNTOWN BAKERSFIELD

MINUTES TO EVERYTHING

A Connected Location



Drive times approximate. Map is schematic, not to scale.

 <p>UNDER 5 MIN Coffee · Schools · Gym · Errands</p>	 <p>5 - 10 MIN Dining · Shopping · Movies · Fitness</p>	 <p>10 - 15 MIN Downtown · Malls · Entertainment</p>				
 Coffee	 Dining	 Shopping	 Schools	 Fitness	 Movies	 Downtown

WHY CHOOSE PALMETTO ESTATES?



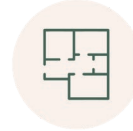
CLOSE TO DINING, SHOPPING & SCHOOLS

Live near the best of Bakersfield
- restaurants, retail, parks,
schools, and more.



FRESH NEW HOMES IN TOWN

Modern floorplans, stylish
finishes, and move-in ready
convenience.



FLEXIBLE PLANS FOR MODERN LIVING

Spaces that work for today -
and adapt for tomorrow.



CONNECTED CONVENIENCE

Spend less time driving and
more time living.



STYLE THAT FEELS CURRENT

A community designed with
today's buyer in mind.



ROOM FOR WHAT'S NEXT

Options like Flexsuite and ADU
offer more possibilities.



A fresh place to put down roots, right where life happens.

Where moments
become memories.



The Shasta

2,578 Sq.Ft. | 4 Bedrooms | 3 Baths | 3-Car Garage

SHASTA

The Gathering Place

The Shasta is thoughtfully designed to balance connection, privacy, and flexibility. Gathering spaces bring the kitchen, dining, and family areas together while maintaining a sense of purpose for each. A distinctive split-wing layout places the primary suite privately apart from the secondary bedrooms. An optional FlexSuite, with the ability to add a private entrance, offers adaptable space for extended family, guests, or future rental opportunities.

◆ Central Gathering Kitchen

A spacious kitchen anchors the home and keeps everyone connected during everyday moments.

◆ Indoor–Outdoor Living

Covered patio extends the home's gathering spaces outdoors.

◆ Distinctive Split-Wing Design

Primary suite privately set apart from the secondary bedrooms.

◆ FlexSuite Option

Create a private living space ideal for guests, extended family, or rental flexibility.



FAMILY ROOM

HIGHLIGHTS

- 2,578 - 2,614 Sq.Ft.
- 3 - 4 Bedrooms
- 3 Baths
- 3-Car Garage

AVAILABLE ELEVATIONS



FARMHOUSE



SPANISH



CONTEMPORARY

SHASTA FLOORPLAN

SPLIT-WING DESIGN

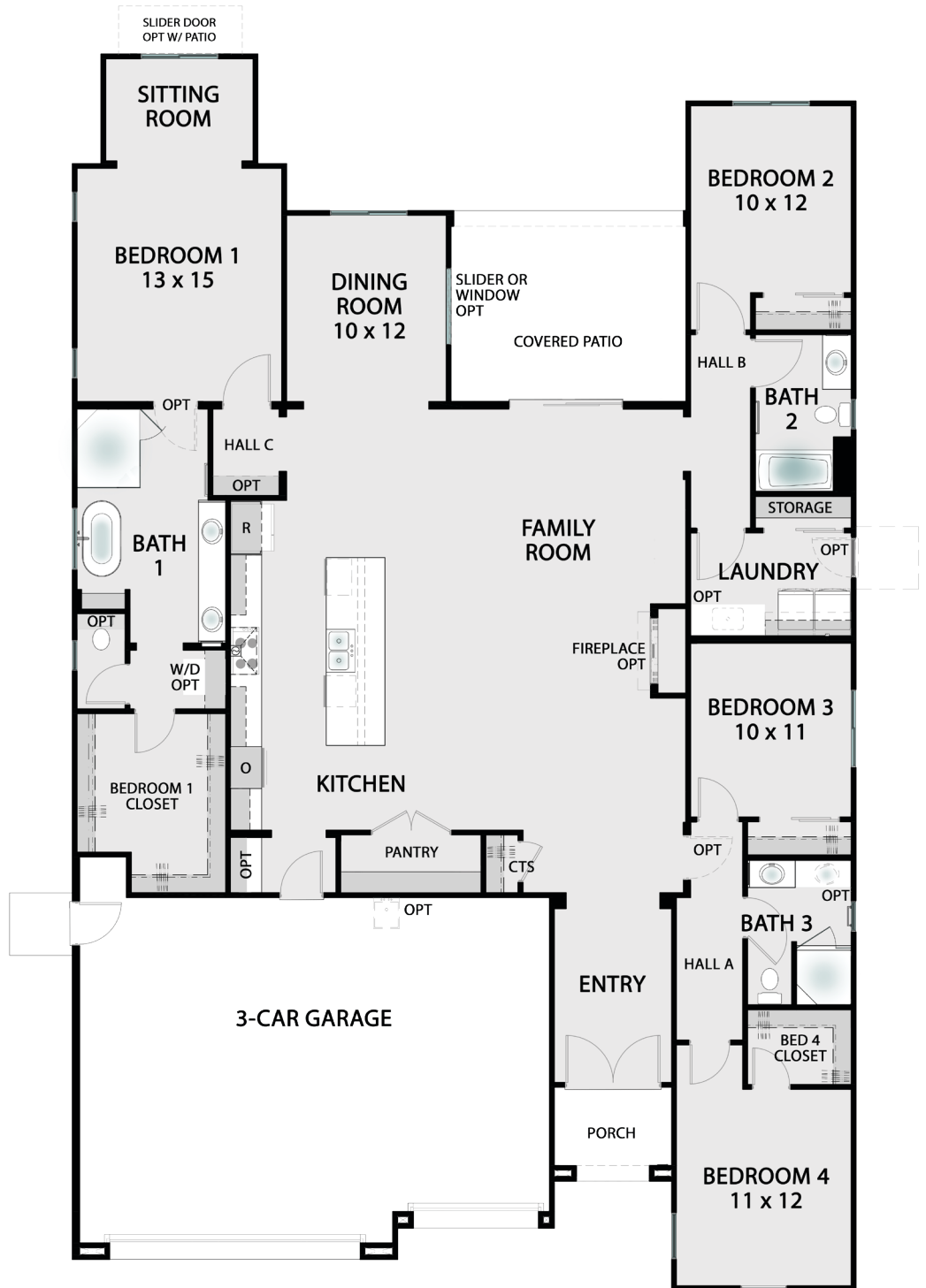
The primary suite is set apart from the secondary bedrooms, creating a quiet retreat while maintaining easy connection to the home's main living spaces.



DINING ROOM
W/ SLIDER OPT



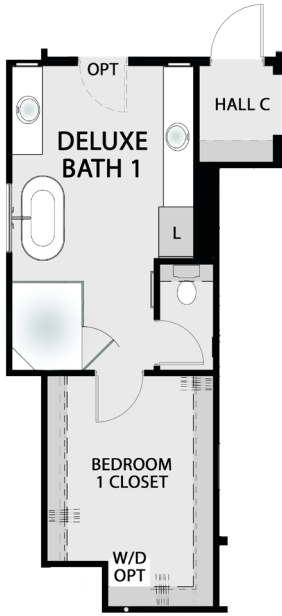
PRIMARY BEDROOM



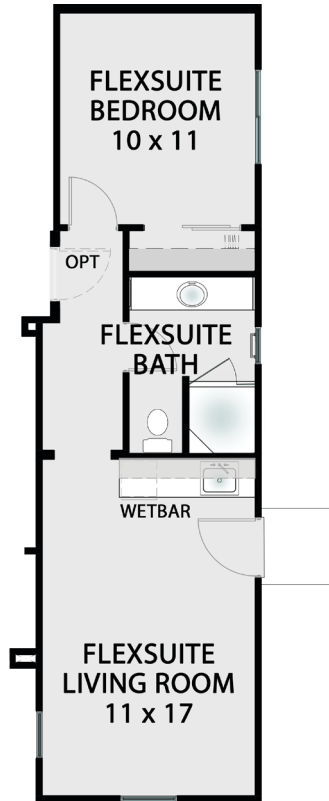
2,578 SQ.FT. | 4 BEDROOMS | 3 BATHS | 3-CAR GARAGE

Designed for Connection

Customize Your Shasta



DELUXE BATH 1
[+36 SQ.FT.]



FLEXSUITE OPT
IN LIEU OF BEDROOMS
3 & 4 AND BATH 3



SHOWER OPT
IN BATH 2

Virtual
Walkthrough



Popular Options



WETBAR OPTION IN FLEXSUITE



DELUXE BATH 1 OPT

BUILDER RESERVES THE RIGHT TO MODIFY PLANS, ELEVATIONS, FEATURES AND SPECIFICATIONS WITHOUT NOTICE. ALL FLOORPLAN DIMENSIONS ARE ESTIMATES.

Where legacies
are made.



The Heirloom

2,662 Sq.Ft. | 4 Bedrooms | 3 Baths | 3-Car Garage

HEIRLOOM

The Legacy Builder

The Heirloom blends thoughtful design with long-term adaptability. A spacious great room and covered patio create inviting spaces for everyday living and entertaining.

With the option to add a private attached ADU in place of one garage, the Heirloom offers a rare opportunity for rental income, extended family living, or long-term investment flexibility, all while maintaining the functionality of the primary home.

◆ Optional ADU or Deluxe ADU

Separate living space ideal for rental income, guests, or multigenerational living.

◆ Optional 4-Car Garage

Expanded garage configuration provides room for vehicles, storage, hobbies, or gear.

◆ Covered Outdoor Living

A generous patio extends the home outdoors for relaxed evenings and entertaining.

◆ Spacious Great Room

A large central gathering space designed for everyday connection.



FAMILY ROOM W/ POCKET PATIO DOOR OPT

HIGHLIGHTS

- 2,662 - 3,175 Sq.Ft.
- 4 - 5 Bedrooms
- 3 - 4 Baths
- 2 - 4-Car Garage

AVAILABLE ELEVATIONS



FARMHOUSE



SPANISH



CONTEMPORARY

HEIRLOOM FLOORPLAN



**Live in one,
rent the other.**

With options like ADU and Deluxe ADU configurations, the Heirloom creates opportunities for rental income, multigenerational living, or long-term property value.



KITCHEN

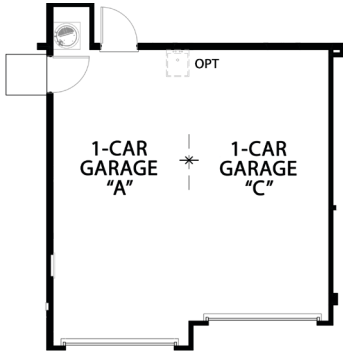


BATH 1

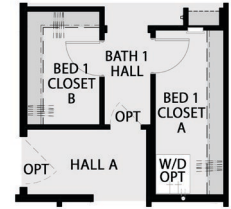
2,662 SQ.FT. | 4 BEDROOMS | 3 BATHS | 3-CAR GARAGE

Designed for Possibility

Customize Your Heirloom



**POCKET PATIO DOOR OPT
IN FAMILY ROOM**

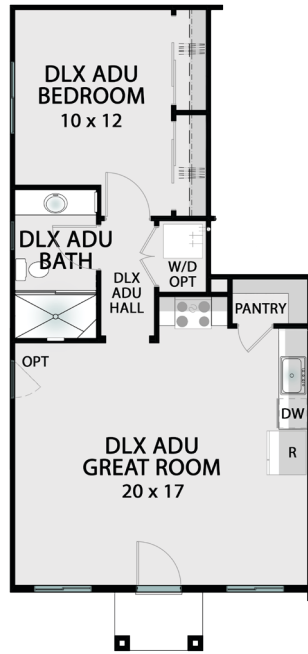


**A/B CLOSET OPT
IN LIEU OF BED 1 CLOSET**

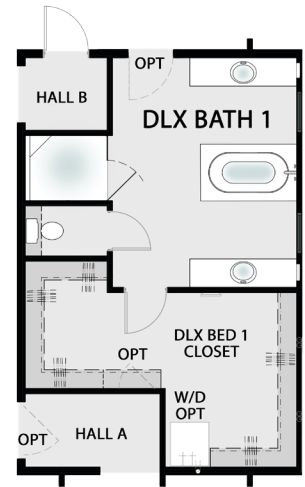
**GARAGE "C" OPT
IN LIEU OF OFFICE
[-215 SQ.FT.]**



**ADU OPT + GARAGE "C"
IN LIEU OF GARAGE B
[435 SQ.FT.]**



**DLX ADU OPT + GARAGE "C"
IN LIEU OF GARAGE B,
BED 4, BATH 3
[686 SQ.FT.]**



**DELUXE BATH 1
[+78 SQ.FT.]**

Popular Upgrades



DLX ADU GREAT ROOM

Virtual Walkthrough



Where traditions
live on.



***The* Sonoma**

2,892 Sq.Ft. | 4 Bedrooms | 3 Baths | 3-Car Garage

SONOMA

The Story Keeper

The Sonoma was designed for generations to gather, grow, and create the moments that become a family's tradition. Thoughtfully designed with flexible living spaces and adaptable room configurations, the Sonoma can expand to up to six bedrooms.

With the option to convert the family room into a second primary suite, Sonoma creates a rare opportunity for true multi-generational living under one roof.

◆ **Optional Private Suite**

Convert the family room into a private suite designed for multi-generational living.

◆ **Family Room with Optional Wet Bar**

A relaxed secondary living space ideal for entertaining or movie nights.

◆ **Formal Dining & Casual Breakfast Nook**

Dedicated dining spaces for both everyday meals and memorable gatherings.

◆ **Flexible Living Spaces**

Convert the dining room into another bedroom or the breakfast nook into a work room.



HIGHLIGHTS

- 2,892 - 3,031 Sq.Ft.
- 4 - 6 Bedrooms
- 3 - 4 Baths
- 3-Car Garage

AVAILABLE ELEVATIONS



FARMHOUSE

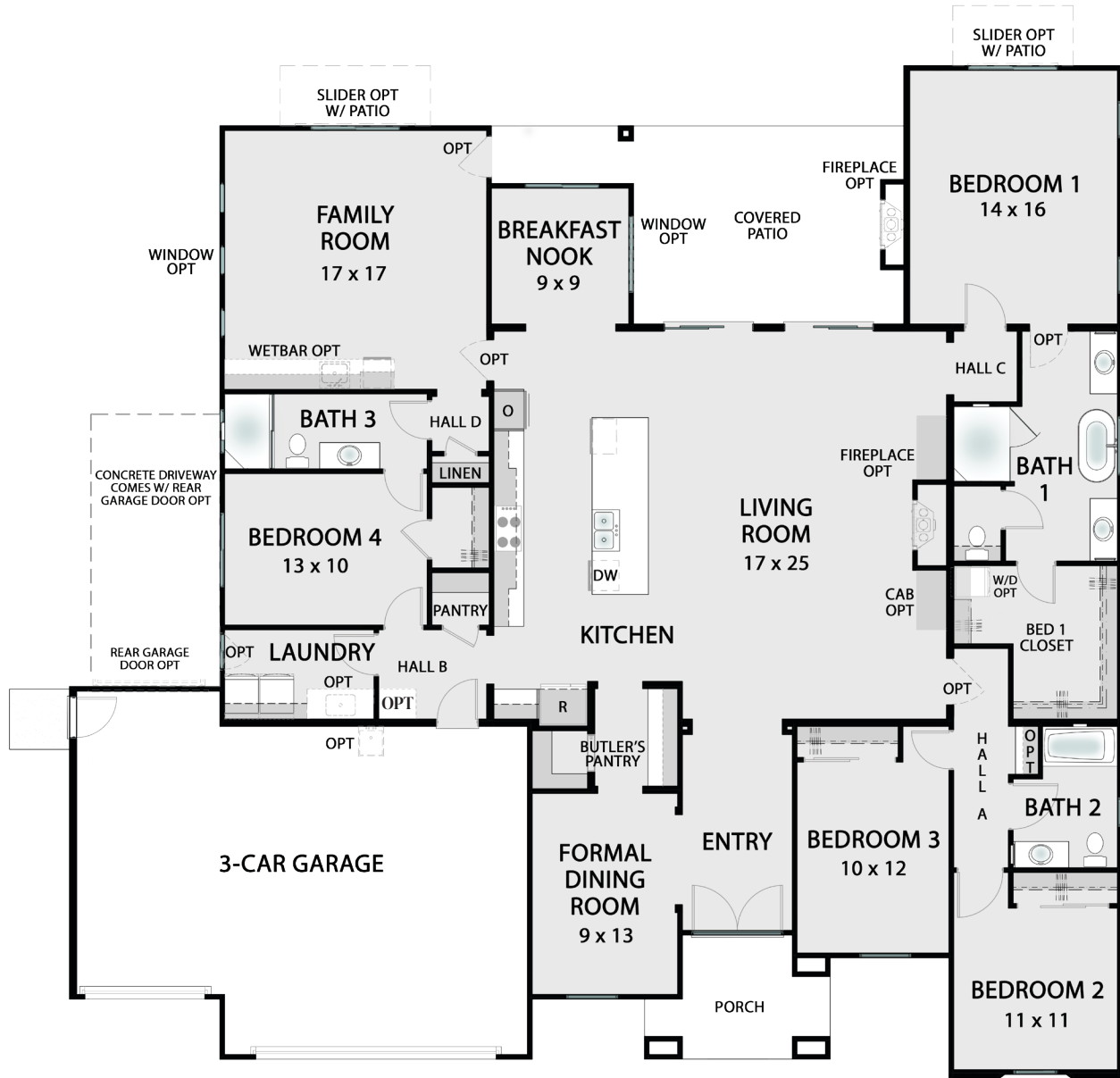


SPANISH



CONTEMPORARY

SONOMA FLOORPLAN



Flexible Spaces

With adaptable rooms and layout options, Sonoma can expand to up to 6 bedrooms, creating space for growing families.



KITCHEN



FAMILY ROOM W/ WETBAR

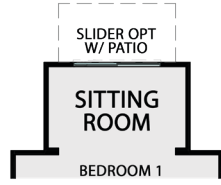
2,892 SQ.FT. | 4 BEDROOMS | 3 BATHS | 3-CAR GARAGE

Designed for Generations

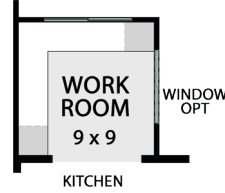
Customize Your Sonoma



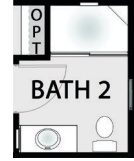
OFFICE OPT
IN LIEU OF
BEDROOM 3



SITTING ROOM OPT
IN BEDROOM 1
[+60 SQ.FT.]



WORK ROOM OPT
IN LIEU OF
BREAKFAST NOOK



SHOWER OPT
IN BATH 2



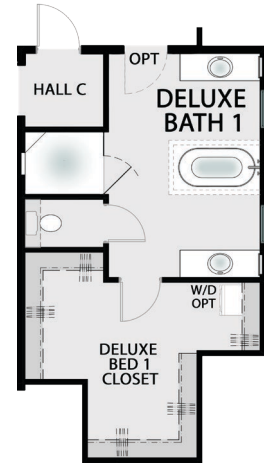
POCKET PATIO DOOR OPT
AT FAMILY ROOM



SUITE BEDROOM OPT
IN LIEU OF FAMILY ROOM



BEDROOM 5 OPT
IN LIEU OF FORMAL
DINING ROOM AND
BUTLER'S PANTRY



DELUXE BATH 1
[+79 SQ.FT.]

Popular Upgrades



SITTING ROOM OPTION

Virtual Walkthrough



BUILDER RESERVES THE RIGHT TO MODIFY PLANS, ELEVATIONS, FEATURES AND SPECIFICATIONS WITHOUT NOTICE. ALL FLOORPLAN DIMENSIONS ARE ESTIMATES.

Where everyone
comes together.



The Tacoma

3,064 Sq.Ft. | 4 Bedrooms | 3 Baths | 3-Car Garage

TACOMA

The Family Estate

The Tacoma is the largest and most luxurious home in the Palmetto Estates collection. Designed to capture the surrounding hilltop views, expansive living spaces and outdoor entertaining areas make the most of the community's elevated setting.

With the widest range of customization options including a pool bath, wet bar, and additional living spaces, the Tacoma offers a home that truly reflects everything you've worked for.

◆ **Designed for the Views**

Living spaces and outdoor patios positioned to capture sweeping hilltop vistas.

◆ **Entertainer's Kitchen & Wet Bar**

A chef-inspired kitchen and optional wet bar create the perfect setting for hosting.

◆ **Expansive Indoor-Outdoor Living**

Patios and gathering spaces extend the home outdoors for entertaining and relaxation.

◆ **Ultimate Flexibility**

Options for a fifth bedroom, bonus room, or work room allow the home to adapt to your lifestyle.



HIGHLIGHTS

- 3,064 - 3,395 Sq.Ft.
- 3 - 5 Bedrooms
- 3 - 5 Baths
- 3-Car Garage

AVAILABLE ELEVATIONS



FARMHOUSE

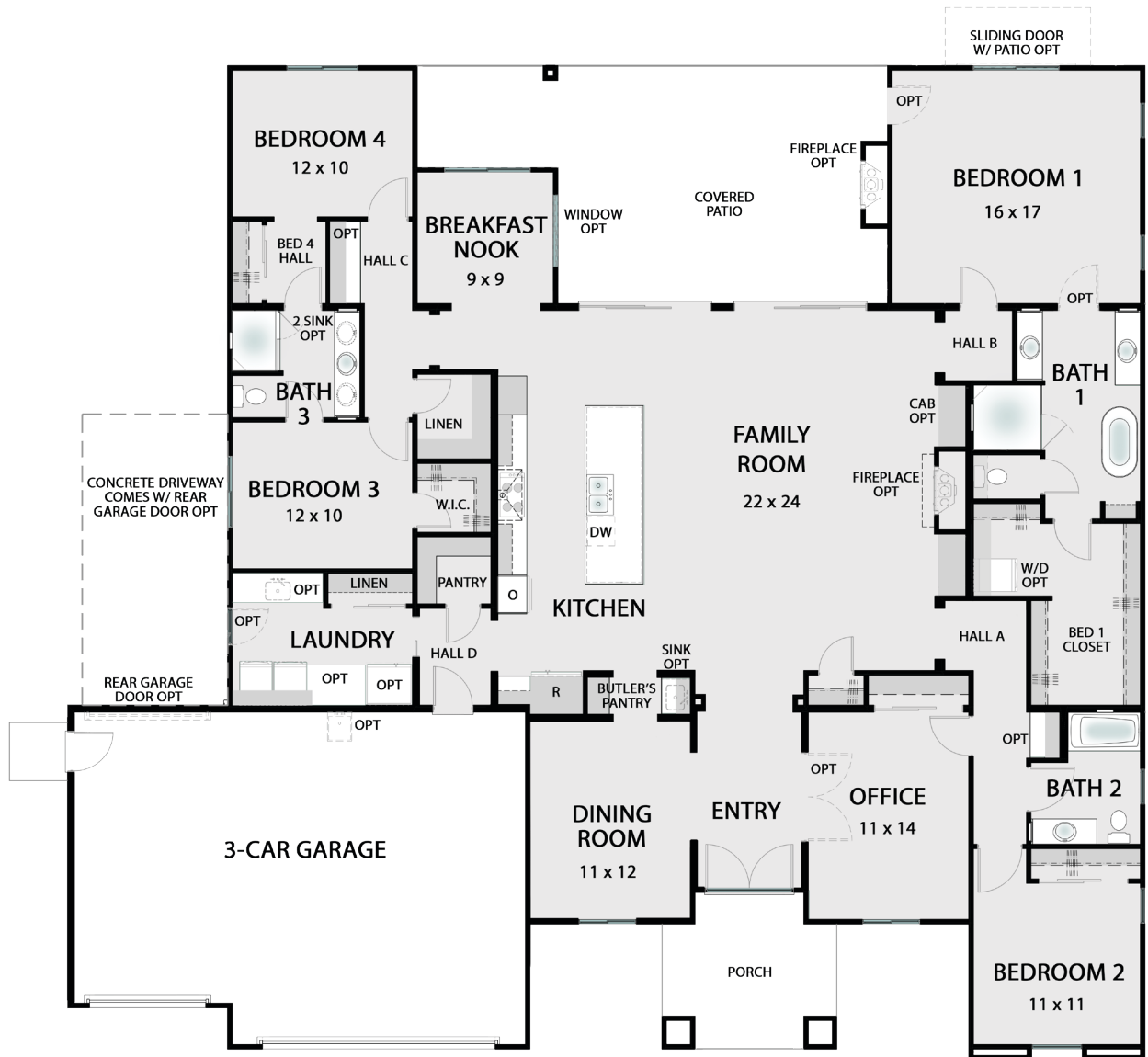


SPANISH



CONTEMPORARY

TACOMA FLOORPLAN



OPEN-AIR LIVING

Expansive gathering spaces connect effortlessly to outdoor living areas designed for relaxed entertaining.



KITCHEN



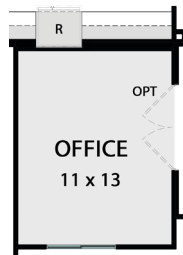
BEDROOM 1

3,064 SQ.FT. | 4 BEDROOMS | 3 BATHS | 3-CAR GARAGE

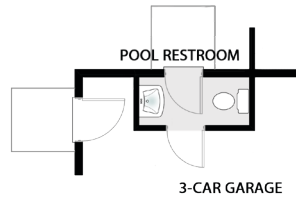
Designed for Luxury
Customize Your Tacoma



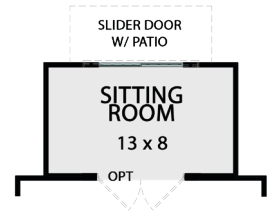
**BEDROOM 5 OPT
 IN LIEU OF OFFICE**



**OFFICE OPT
 IN LIEU OF DINING
 ROOM**



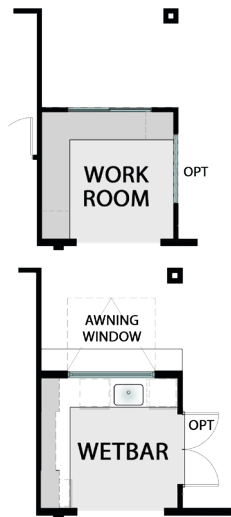
**POOL
 RESTROOM OPT
 [+29 SQ.FT.]**



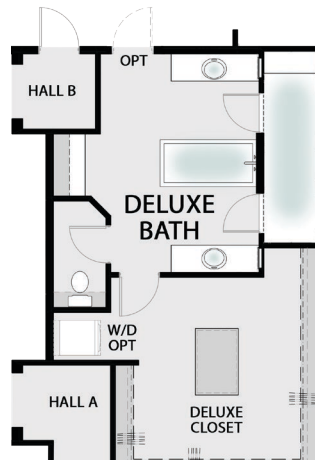
**SITTING ROOM OPT
 IN BEDROOM 1
 [+109 SQ.FT.]**



**BONUS ROOM OPT
 IN LIEU OF BED 4 &
 BREAKFAST NOOK
 [+68 SQ.FT.]**



**WORK ROOM OR
 WETBAR OPT
 IN LIEU OF
 BREAKFAST NOOK**



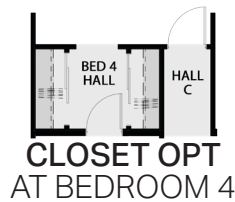
**DELUXE BATH OPT
 [+154 SQ.FT.]**



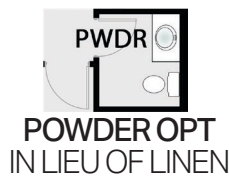
**POCKET PATIO
 DOOR OPT
 IN FAMILY ROOM**



**SHOWER OPT
 IN BATH 2**



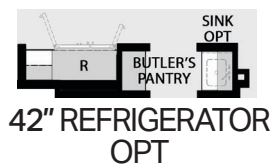
**CLOSET OPT
 AT BEDROOM 4**



**POWDER OPT
 IN LIEU OF LINEN**



**DESK OPT
 AT HALL C**



**42" REFRIGERATOR
 OPT**

Virtual Walkthrough



Signature Features

Architectural Exteriors

- Distinctive exterior elevations
- Designer-coordinated color palettes
- Durable concrete tile roofing
- Covered entry porches
- Professionally landscaped front yards with irrigation

Interior Design

- Spacious and thoughtfully designed floor plans
- Volume or raised ceilings
- Specially tailored interior finishes
- Modern flat baseboards and designer doors
- Hand-textured drywall with square corners

Chef's Kitchen

- Oversized island with seating
- Quartz countertops
- Factory-finished cabinetry with concealed hinges
- Walk-in pantry or generous pantry storage
- Decorative hood with tiled backsplash
- Optional double oven

Deluxe Primary Bath

- Quartz countertops with matching backsplash
- Designer vanity cabinetry with concealed hinges
- Fully tiled spa-style showers
- Curated bath fixtures and hardware

Connected Living

- Media outlets throughout main living spaces
- Hardwired smoke and carbon monoxide detectors
- Optional security alarm system

Energy Efficiency

- Dual-pane windows and sliding doors with Low-E glass
- High-efficiency electric heating and air conditioning
- Energy Efficient Appliances
- Solar energy system
- Prewired for electric vehicle charger

Looking for something more?

A variety of options and upgrades are available to personalize your home. Ask your Palmetto Estates representative for details.

Every Home Tells a Story

You contribute to that story with the memories you make each day. From the pictures you hang on the walls to the marks left on the floors, your home becomes a reflection of who you are; your values, your traditions, and the moments that shape your family's life. Your home becomes the place where generations gather, legacies grow, and stories live on.

Palmetto Estates is where your next chapter begins.

As the seller of this community, Palmetto Estates LLC has been intentional in choosing a builder who understands the importance of that story. We selected S&S Homes because of their long-standing history in the community, their commitment to quality, and the care they bring to every home and every buyer.

With decades of experience and deep local roots, S&S Homes shares our vision for creating a neighborhood where families feel cared for, connected, and proud to call Palmetto Estates home.

The rest of the story belongs to you.

Builder Story

Since 1985, S&S Homes has helped thousands of families build homes designed for the way they live. As a family-owned and operated company, they take pride in creating homes that combine thoughtful design, quality craftsmanship, and lasting value.

Their commitment to service begins before you purchase and continues long after you move in. From construction to customer care, their team works together like one family, and when you purchase a home built by S&S Homes, you become part of that family.

Welcome to Palmetto Estates. Welcome to the S&S family. *Welcome home.*



PALMETTO ESTATES

Live Connected



Contact Us to Schedule
A Private Tour

661-215-2727

info@palmettoestateshomes.com

www.palmettoestateshomes.com




RESOCO
DRE# 02133568